

GYPREX® L

CEILING TILES

Advantages



Durability: Gyprex® is a robust tile with resistance to scratches and dents.



Ease of maintenance: The vinyl surface of Gyprex® ceiling tiles can be cleaned using a damp cloth with water and a mild detergent.



Recyclability: Gyprex® ceiling products' core is manufactured from natural, recyclable materials.

Gyprex® L is a vinyl-faced tile with a gypsum core used with Gypframe® Essential exposed grid to form a lay-in tile suspended ceiling. It has a durable, washable vinyl finish bonded to the board and is ideal for use in a range of commercial and residential ceiling applications.

GYPREX® L

CEILING TILES



Description	Value	Reference standard
Thickness	6.4 mm	-
Edge Type	Square (A)	-
Dimensions	6.4 mm - (1200 x 600)	-
Weight (kg/m ²)	6.4 mm - Approx. 3.96 kg/m ²	-
Reaction to fire	6.4 mm - Combustible B/ B1/ 2 classification	SANS 10177-5

Usage

Ideally suited for environments where economical installation and low maintenance are primary considerations.

Consult the latest version of SANS 10400-T for suitable areas of use.

Ceiling Tile Performance

Fire Performance

The Gyprex® L tile does not provide fire resistance despite having a non-combustible gypsum core.

Reaction to Fire

Standard	Thickness of tile (mm)	Performance
SANS 10177-5	6.4 mm	*Combustible

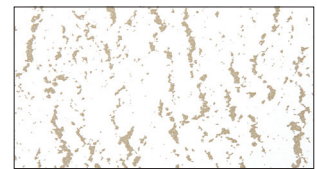
*According to SANS 10400-T, non-combustible products can be used in all occupancies. **For combustible ceiling tiles, we recommend consulting a building professional to verify the suitability of use in specific applications.**

Gyprex® L 6.4 mm

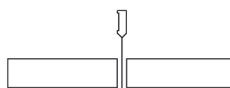
White



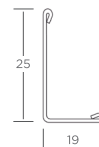
Fissured



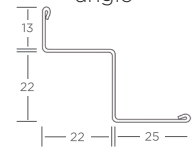
Edge Detail for Gypframe® Essential exposed grid



Trim detail for Gyproc M6 wall angle



Trim detail for Gyproc SM25 recessed wall angle



Environment

Gyprex® tiles are suitable for use in areas that are not subject to continuous damp conditions. The tiles are not suitable for use above 70% relative humidity, or in temperatures consistently above 49°C. They can be exposed to freezing temperatures without a risk of damage.

Fixtures

Gyprex® L tiles are suited to support light-weight spotlights or downlighters.



GYPROC a division of Saint-Gobain Construction Products SA (Pty) Ltd

300 Janadel Avenue • Halfway House
• Midrand 1686 • South Africa

PO Box 50416 • Randjesfontein
• 1683 • South Africa

+27 (0)12 657 2800

www.gyproc.co.za

SAINT-GOBAIN CONSTRUCTION
PRODUCTS SOUTH AFRICA (PTY) LTD.
Reg no: 1937/010220/07